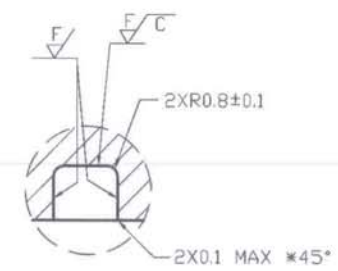
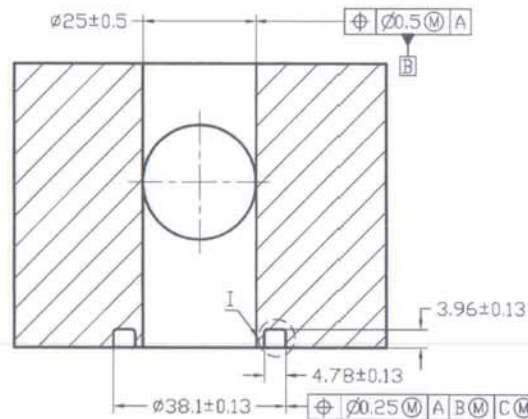
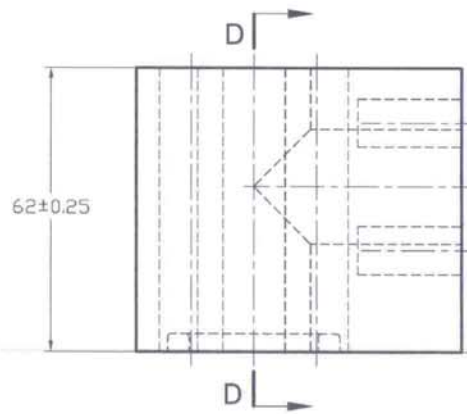
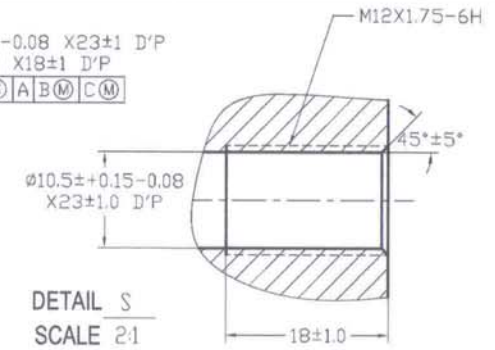
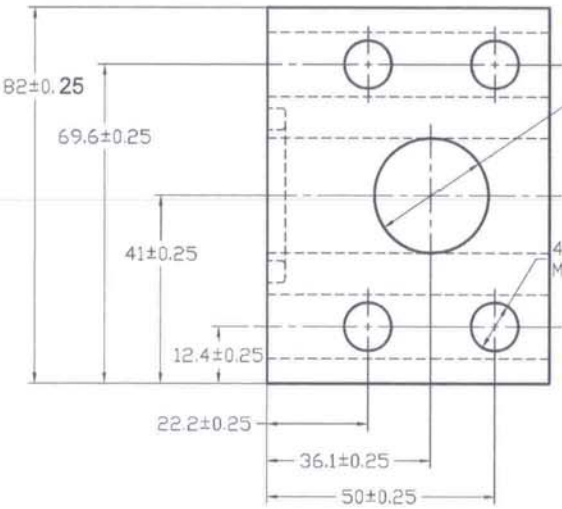
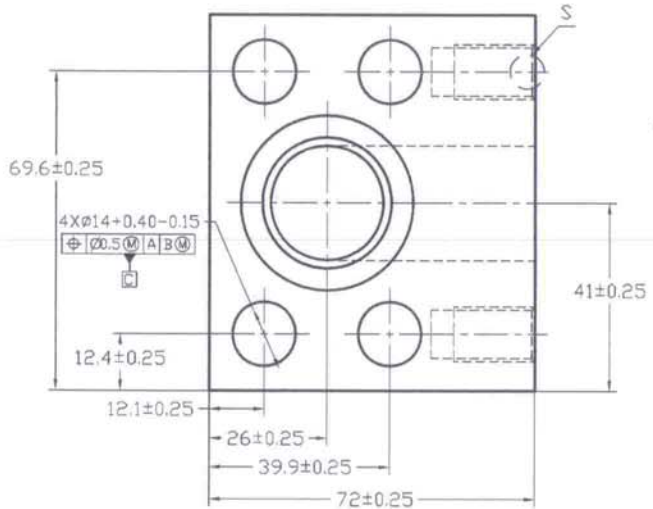


REV 更改号	DATE 日期	REVISION DETAILS 更改内容	APPD 审核并批准



DETAIL I
SCALE 2:1



DETAIL S
SCALE 2:1

UNLESS SPECIFIED
ALL DIMENSIONS IN mm
MACHINED SURFACES Ra=3.2um
ANGLE TOLERANCES ±1°
Other tolerance except angles,
in accordance with
GB/T1804-2000(ISO2768-1)-m
and GB/T1184-1996(ISO2768-2)-m

其它事项,
图示尺寸单位为mm
未注机加工表面粗糙度Ra=3.2um
角度公差±1°
其它未注公差(除角度外)均按:
GB/T1804-2000(ISO2768-1)-m和
GB/T1184-1996(ISO2768-2)-m

PART No 零件名	40898
SCALE:	APPD: 批准 Zhang
NTS	DATE: 日期 25/02/16
	DRN: TangHailing 制图 2016.02.19
	CHK: LiJunBiao 审核 2016.02.19

MATERIAL	Chinese steel 20
FINISH	Remove all sharp edges,burrs,slivers and swarf, break all edges 0.127-0.254mm. 去除所有毛刺,铁屑等残留物,锐边倒钝0.127-0.254mm. ZINC PLATING WITH 12um MICRONS MINIMUM PLATING THICKNESS AND TRIVALENT CHROMATE PASSIVATION AND WITHSTAND 96 HRS TO WHITE / 144 HS TO RED RUST IN SALT SPRAY TEST. 镀锌,三价铬钝化,银白色,盐雾试验96小时无白斑,144小时无红锈,镀锌层厚度大于12um.